



5489

FOREST HILL ROAD

RE/MAX
CAMOSUN
Each Office Independently Owned and Operated



FARUPSCOTT
GROUP

A Legacy Passed Down – Two Homes on 5.23 Acres Overlooking Elk Lake

For the first time in over 35 years, this remarkable estate—nestled high above Elk Lake with views to the Mount Baker—is ready to welcome its next chapter.

Originally chosen for its natural beauty, privacy, and potential for multi-generational living, the property has gracefully evolved into a deeply loved family retreat. Two separate homes—each with their own character—sit surrounded by sloping fields, heirloom orchards, fruit and nut trees, and terraced gardens that have been cultivated by hand and heart.

The main residence offers 4 bedrooms with ensuites, open-concept living, and a sun-drenched deck with a wood-fired forno oven—host to countless family gatherings. Below, a private one bedroom suite provides comfort for guests or caretakers. The second home, with its own driveway, offers flexible living for extended family—complete with full kitchen and double garage. This is more than a home. It's a rare and peaceful legacy property, waiting to write its next story.



PROPERTY MAP

- 5 BED / 5.5 BATH / 3,914 SF HOME
- 1,393 SF CARRIAGE HOME
- 5.23 ACRES OF STUNNING LANDSCAPE
- STEPS FROM ELK LAKE















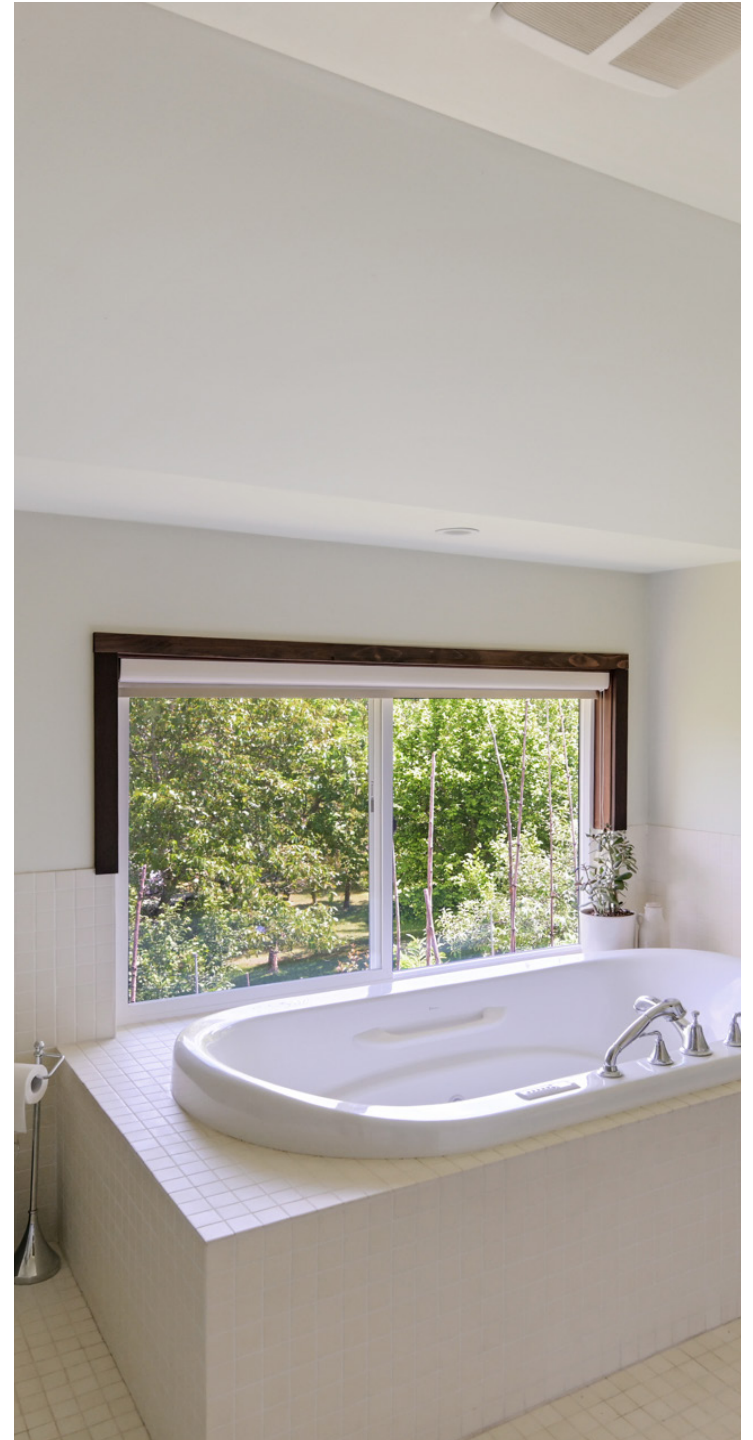






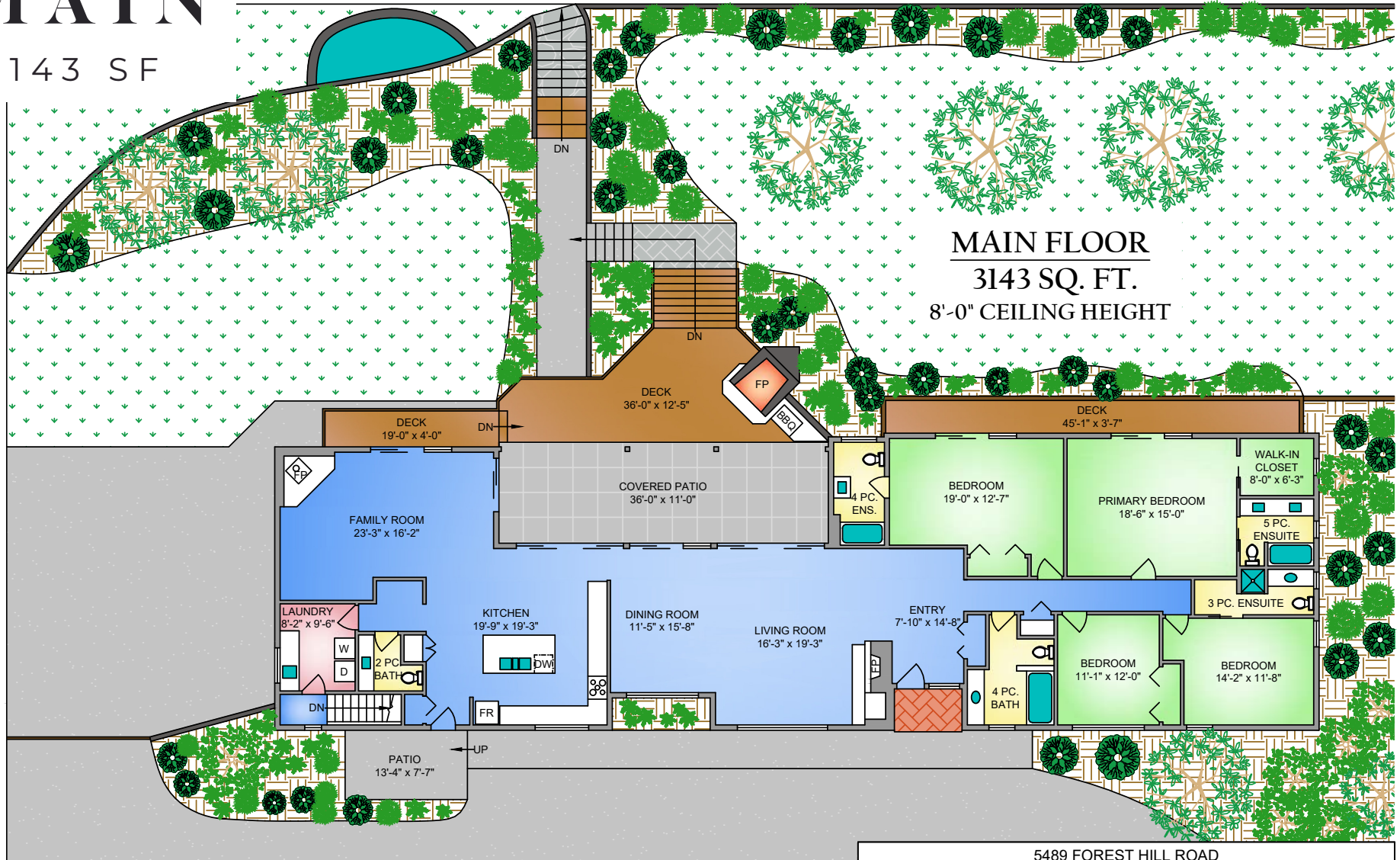






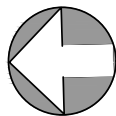
MAIN

3,143 SF



MAIN FLOOR
3143 SQ. FT.
8'-0" CEILING HEIGHT

NORTH



0' 5' 10'
 SCALE

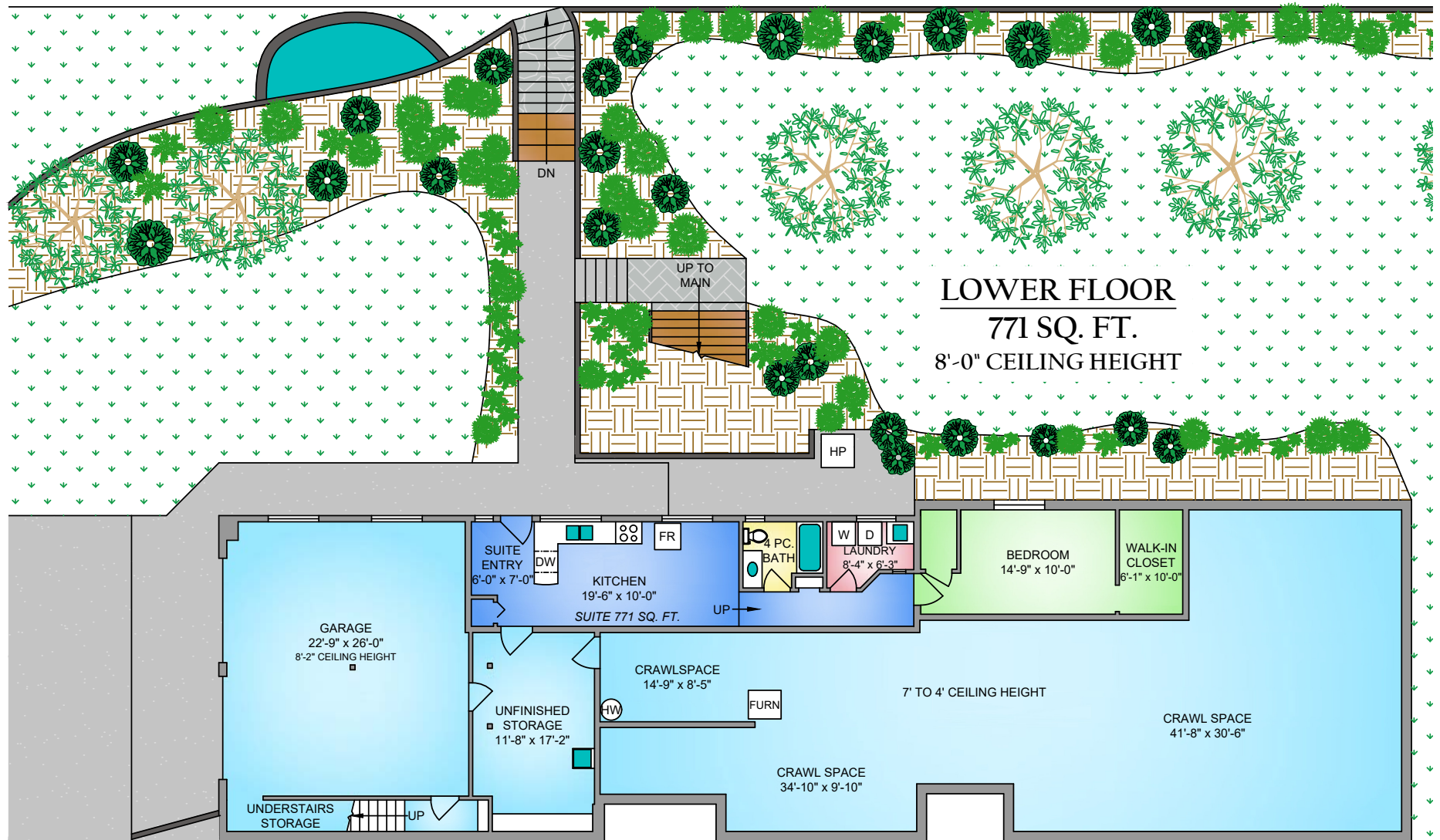
5489 FOREST HILL ROAD
 JULY 9, 2025

PREPARED FOR THE EXCLUSIVE USE OF FARUP & SCOTT
 PLANS MAY NOT BE 100% ACCURATE, IF CRITICAL BUYER TO VERIFY.

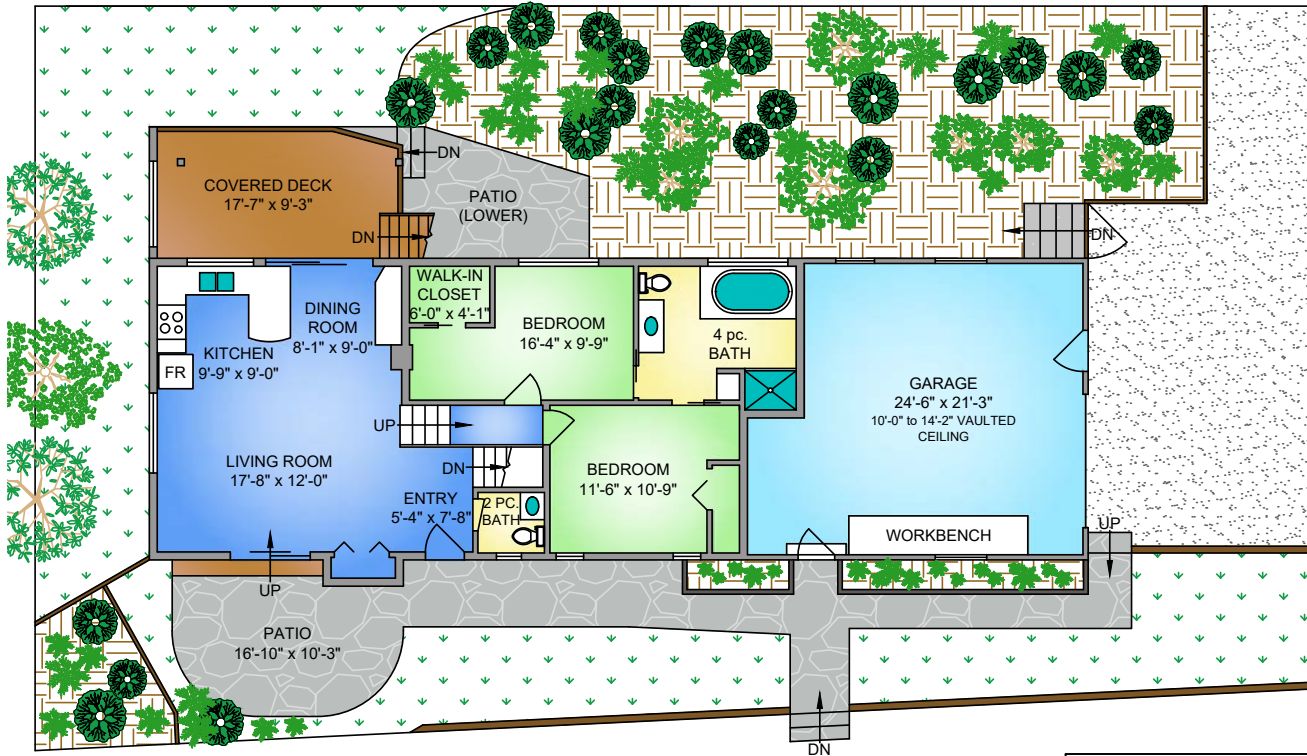
FLOOR	AREA (SQ. FT.)				
	FINISHED	UNFIN.	CRAWL	GARAGE	DECK / PATIO
MAIN	3143	-	-	-	982
LOWER	771	230	1765	747	-
TOTAL	3914	230	1765	747	982
CARR. MAIN	1012	-	-	506	307
CARR. LOWER	381	435	-	-	301
TOTAL	1393	435	-	506	608
TOTAL	5307	665	1765	1253	1590

LOWER

771 SF

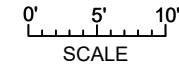
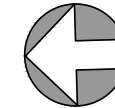


CARRIAGE HOME



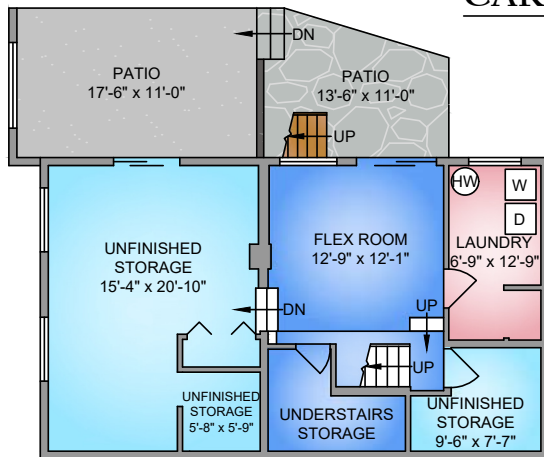
**CARRIAGE
MAIN FLOOR**
1012 SQ. FT.
6'-2" to 10'-0" VAULTED
CEILING

NORTH



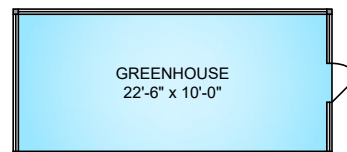
CARRIAGE - LOWER FLOOR

381 SQ. FT.
8'-0" CEILING HEIGHT



GREENHOUSE

250 SQ. FT.

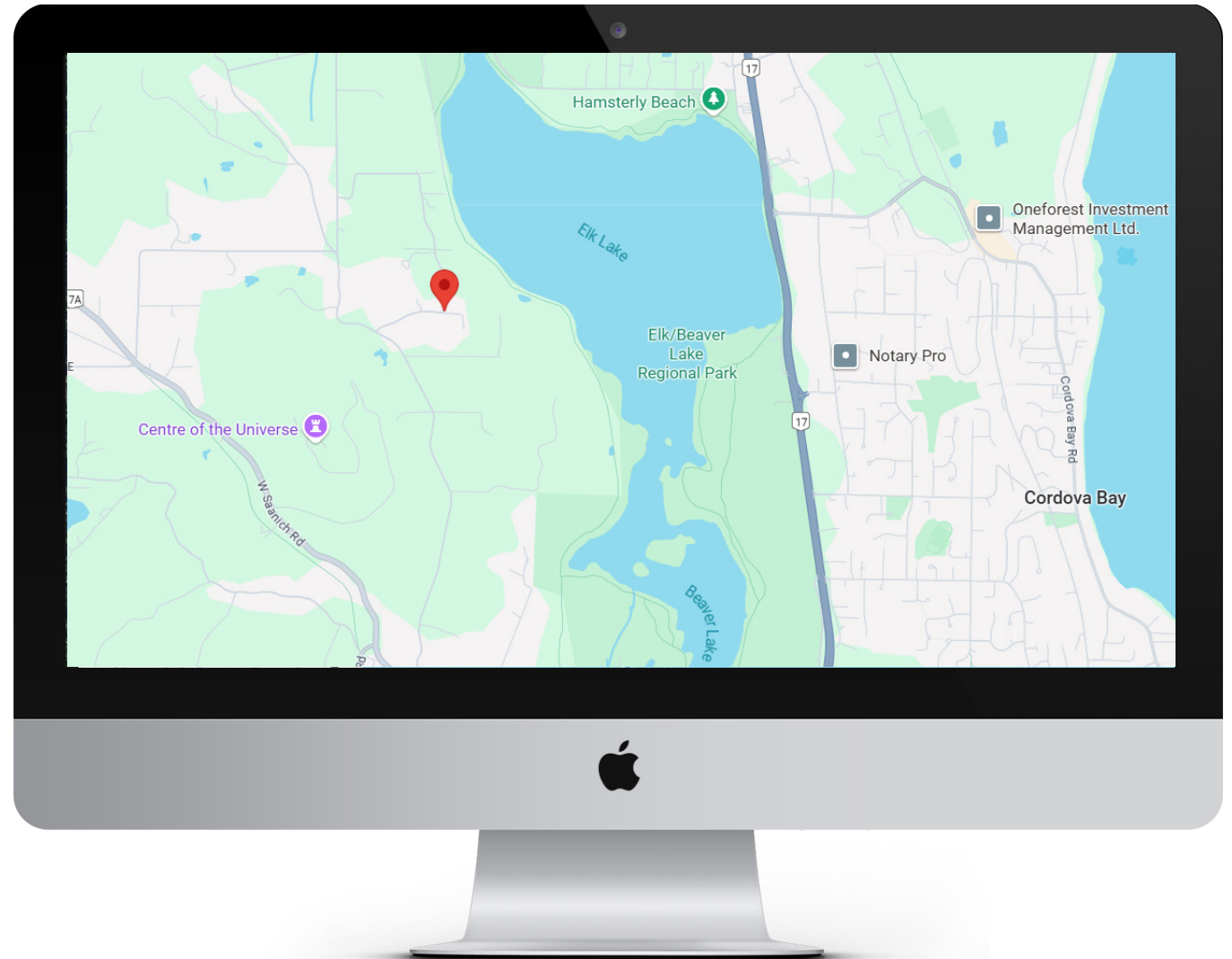


5489 FOREST HILL ROAD
JULY 9, 2025
PREPARED FOR THE EXCLUSIVE USE OF FARUP & SCOTT
PLANS MAY NOT BE 100% ACCURATE, IF CRITICAL BUYER TO VERIFY.

FLOOR	AREA (SQ. FT.)				
	FINISHED	UNFIN.	CRAWL	GARAGE	DECK / PATIO
MAIN	3143	-	-	-	982
LOWER	771	230	1765	747	-
TOTAL	3914	230	1765	747	982
CARR. MAIN	1012	-	-	506	307
CARR. LOWER	381	435	-	-	301
TOTAL	1393	435	-	506	608
TOTAL	5307	665	1765	1253	1590

SAANICH / ELK LAKE

Living in West Saanich / Elk Lake offers a unique blend of natural beauty, recreational opportunities, and convenient access to urban amenities. The area is ideal for outdoor enthusiasts, with Elk Lake and Beaver Lake providing year-round activities like kayaking, paddleboarding, swimming, and scenic walking trails. Residents enjoy a peaceful, community-oriented atmosphere while still being just a short drive from downtown Victoria. The proximity to parks, farms, and local markets also supports a healthy, active lifestyle and a strong connection to nature. Whether you're raising a family or seeking tranquility close to the city, Saanich is a wonderful place to call home.





JODIE FARUP & CHRIS SCOTT

PERSONAL REAL ESTATE CORPORATION

PERSONAL REAL ESTATE CORPORATION

RE/MAX Camosun | 250 370 7788

jodie@farupscott.com | chris@farupscott.com

www.farupscott.com

RE/MAX
CAMOSUN
Each Office Independently Owned and Operated



FARUPSCOTT
GROUP